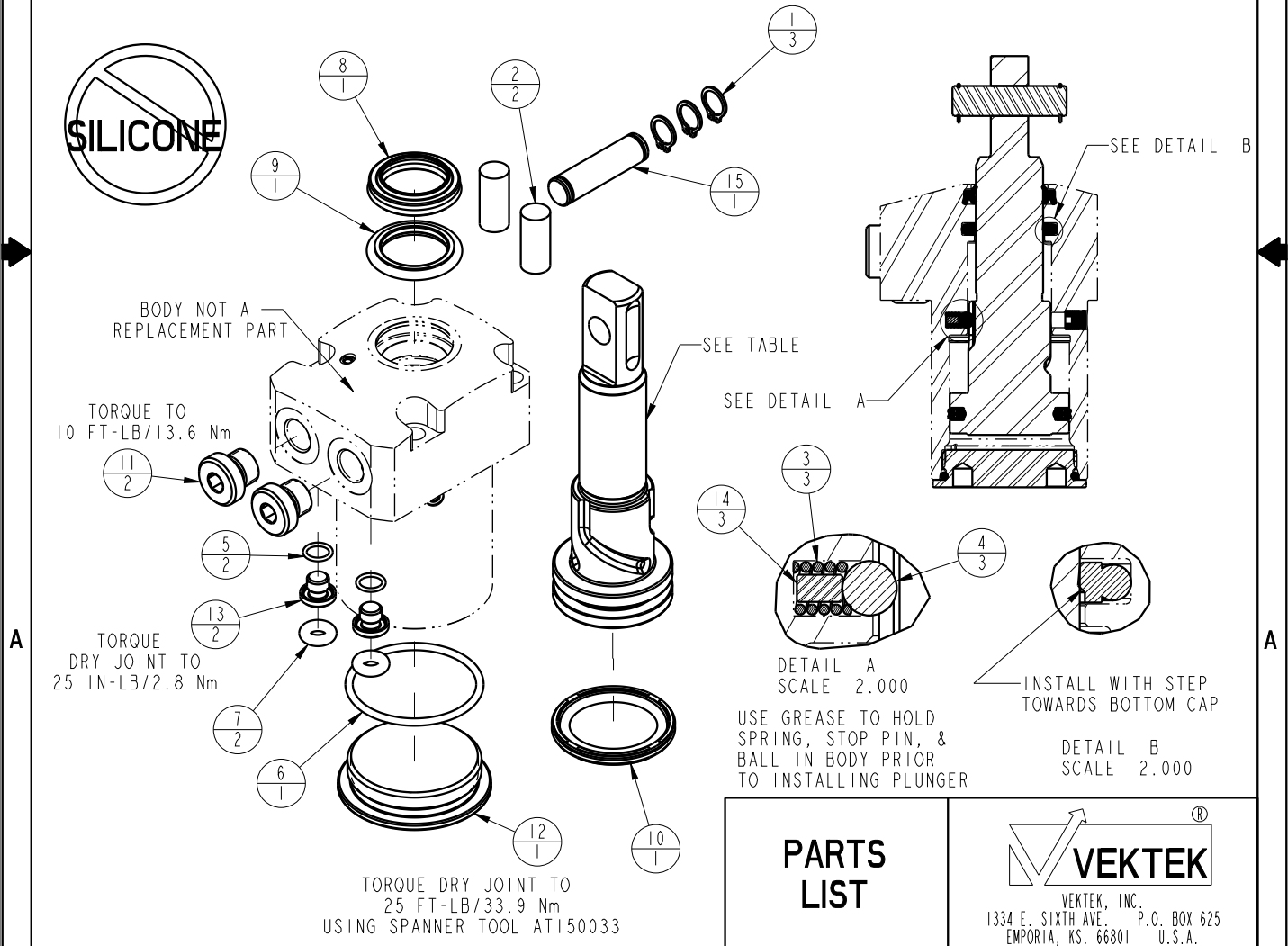



ASSEMBLED PART NO.	PLUNGER PART NO.	CAM STYLE	ASSEMBLED ORIENTATION
LI-4032-10-S-0	81400212	STR	0
LI-4032-10-S-60			60
LI-4032-10-S-120			120
LI-4032-10-S-30			30
LI-4032-10-S-90			90
LI-4032-10-S-150	81400222	LH	150
LI-4032-10-L-0			0
LI-4032-10-L-60			60
LI-4032-10-L-120			120
LI-4032-10-L-30			30
LI-4032-10-L-90	81400252	RH	90
LI-4032-10-L-150			150
LI-4032-10-R-0			0
LI-4032-10-R-60	81400232	RH	60
LI-4032-10-R-120			120
LI-4032-10-R-30			30
LI-4032-10-R-90	81400262	RH	90
LI-4032-10-R-150			150

NO	QTY	PART NO	DESCRIPTION	SEAL KIT	CLEVIS PIN KIT
1	3	23050034	RING, RTNG, EXT, 0.312		X
2	2	23340002	STOCK, CORD, .31 X .69, 50, NBR		X
3	3	23350085	SPRING, COMPRESSION	X	
4	3	23650009	BALL, TUNGSTEN-CARBIDE, 4mm	X	
5	2	39051079	O-RING, (6mm X 1)	X	
6	1	39051082	O-RING, (33mm X 2)	X	
7	2	39051087	O-RING, (4mm X 3)	X	
8	1	39053042	SEAL, WIPER, SNAP IN, WED, 18, 94A, AU	X	
9	1	39056002	SEAL, STEP, ROD, 18	X	
10	1	39056022	SEAL, CAP, PISTON, 32, 90A, AU GRPHT FLD	X	
11	2	43068004	PLUG, SOCH, G1/8		
12	1	81400152	CAP, LC/SC, 7MPa, 32B		
13	2	81400200	PLUG, MANIFOLD, 7MPa, M6		
14	3	81400202	PIN, STOP, BALL, METRIC, 4mm BALL	X	
15	1	81400272	PIN, ROCKER, SC, 7MPa, 32B		X
N/A	N/A	L6014320	KIT, SEAL, SC, 7MPa, 32B	NOTED	N/A
N/A	N/A	L6214320	KIT, CLEVIS PIN, SC, 7MPa, 32B	N/A	NOTED



PARTS LIST	 VEKTEK, INC. 1334 E. SIXTH AVE. P.O. BOX 625 EMPORIA, KS. 66801 U.S.A.	
	ASSEMBLIES AFFECTED SEE ASSEMBLY MODEL NO. TABLE ABOVE	PARTS LIST, ASSY, SC, TF, 7MPa, 32B, CLEVIS
SIZE A	LPL1425	REV B

B	3273	RELEASE	JDW	08/15/18
REV	IN ACCORDANCE WITH ECN	EFFECTIVE DATE	REVISED BY	DATE
DRW BY: MAJ	DRAWING STATUS: Released			
DATE: 4-22-15	PRODUCTION APPROVED FOR RELEASED STATUS ONLY			